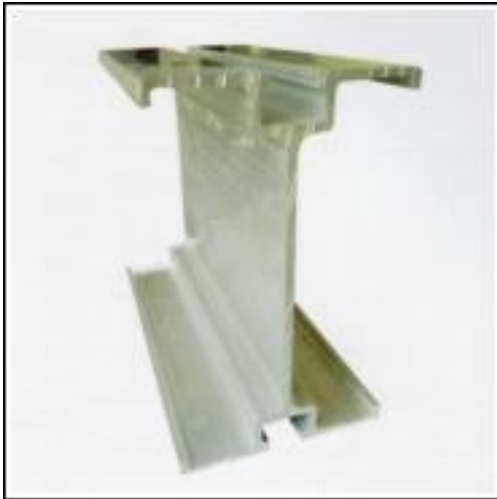


Aluminum Formworks System

H-BEAM TYPES



140 H Beam with Wood
(For Joist)



140 H Beam
(For Joist & Ledger)



122 H Beam
(For smaller slab thickness)

Aluminum Formworks System



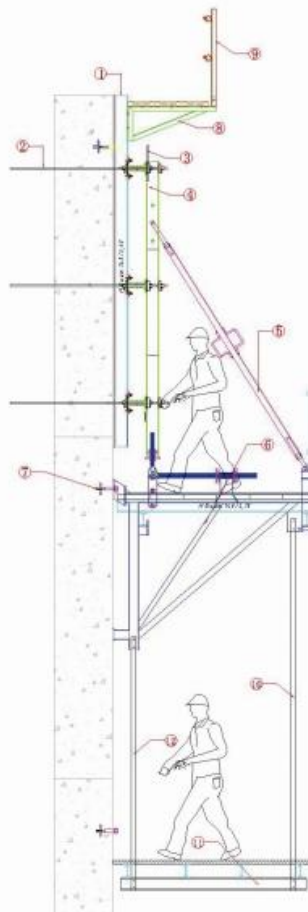
Aluminum Formworks System

Climbing System



Aluminum Formworks System

Climbing System



1. Alu 140 H-Beam
2. Tie Rod
3. Horizontal Waler
4. Vertical Waler
5. Turnbuckle Props
6. Climbing-190 Bracket assembly
7. Stop Anchor Plate
8. Access Bracket
9. Guard Railing assembly
10. Outer Hanger assembly
11. Lower Platform
12. Inner Hanger assembly

Aluminum Formworks System

Climbing System



Aluminum Formworks System

Column System



1 ALU 140-H BEAM

2 DOUBLE STRONG BACK WALER

3 PLYWOOD

4 TIE-ROD

5 LONG TURNBUCKLE PROP

6 SHORT TURNBUCKLE PROP

7 ACCESS BRACKET(PLATFORM)

8 CORNER TIE BEARING

9 CORNER SPLICE PLATE

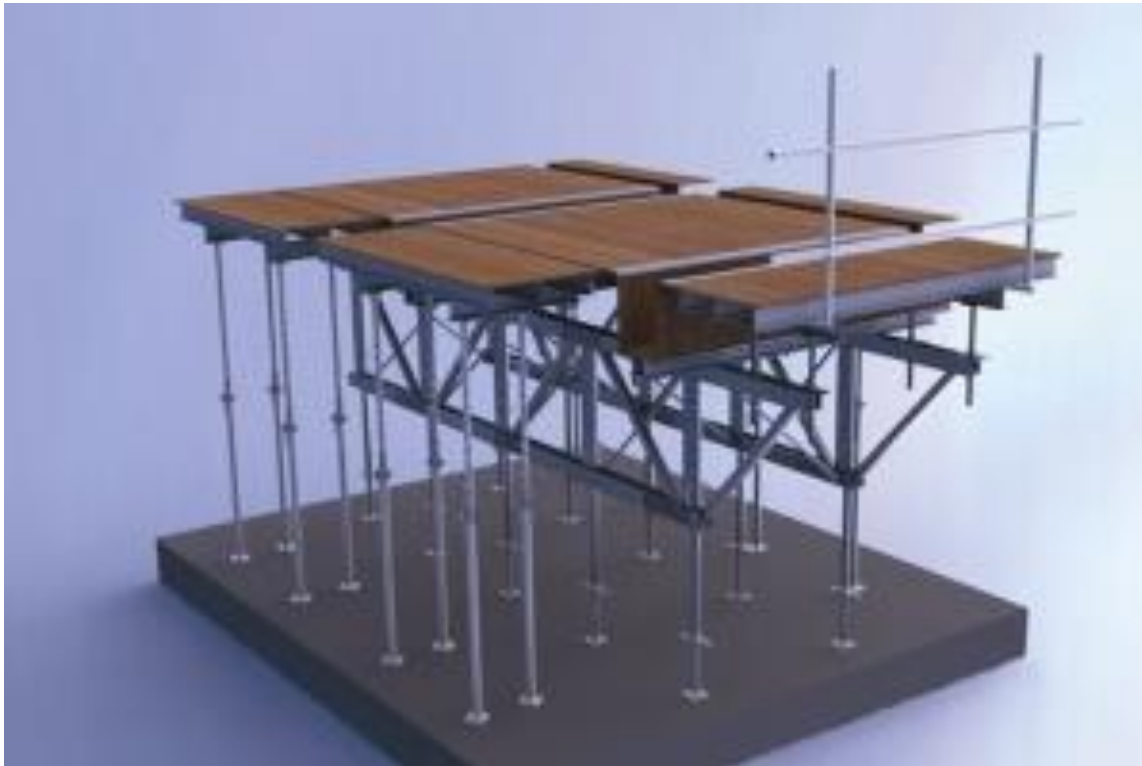
Aluminum Formworks System

Column System



Aluminum Formworks System

Flying Table Form



The system is 95% aluminum (Alloy 6061-T6) which means Lighter more durable and longer life span than steel and timber system.

Aluminum Formworks System

Flying Table Form



Aluminum Formworks System

Frame Shoring

100mm drop can be achieved using the Drop Head which gives room to strike all the horizontal components including the Horizontal&Diagonal Braces of the main frame assembly and leaving only the vertical components as back-propping ,3 to 4 days cycle can be achieved with a cost effective solution (2 sets of vertical components +1 set of horizontal components)



Aluminum Formworks System

Frame Shoring



Aluminum Formworks System

Retaining Wall



1. ALU 140-H BEAM
2. ALUMINIUM STRONG BACK
3. GUARDRAIL POST
4. HEAVY DUTY TURNBUCKLE PROP SUPPORT
5. SINGLE SHOE ADAPTOR
6. ACCESS BRACKET(PLATFORM)
7. PLYWOOD

Aluminum Formworks System

Retaining Wall



1. Improve productivity and Minimize labour
2. Reduce construction cycle time
3. Less wastage of plywood
4. High recovery value for the used materials
5. No nails needed
6. Since the whole system lifting, no small parts loss
7. Environmental protection and energy saving
8. Materials versatile



Aluminum Formworks System

Slab Panel



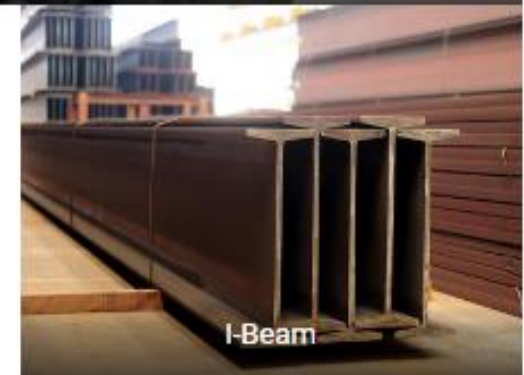
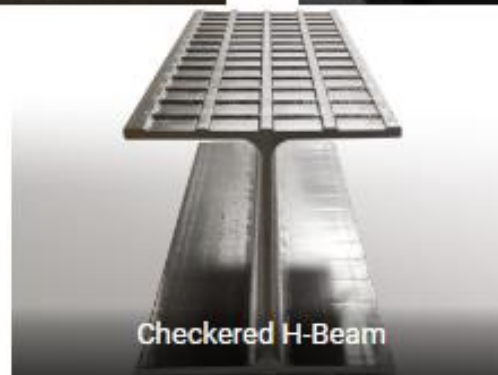
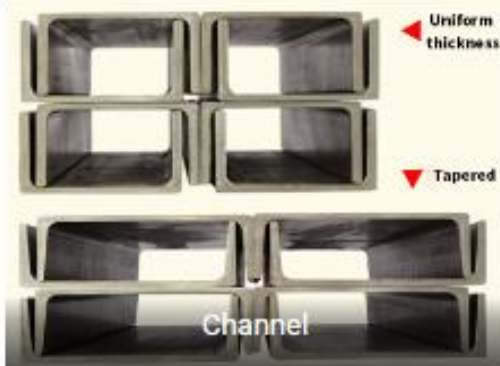
Scaffolding



We provide the design and consulate service, which include scaffolding products, mold tooling, project design, project demonstration, construction management and construction technical support.



Steel Structural



PVC Foam Boards



Tolerance

Thickness	Thickness tolerance					
	Size 1220mmX2440mm		Size 1560mmX3050mm		Size 2050mmX3050mm	
	in mm	absolute in mm	in mm	absolute in mm	in mm	absolute in mm
1mm	-0.9~+1.2	0.2				
2mm	±0.2	0.3	±0.2	0.3	±0.2	0.3
3mm	±0.2	0.3	±0.2	0.3	±0.2	0.3
4mm	±0.2	0.4	±0.2	0.4	±0.2	0.4
5mm	±0.2	0.4	±0.2	0.4	±0.2	0.4
6mm	±0.2	0.4				

Length tolerance: 0~+4mm

Width tolerance: 0~+2mm

Density tolerance: ±0.03g/cm³

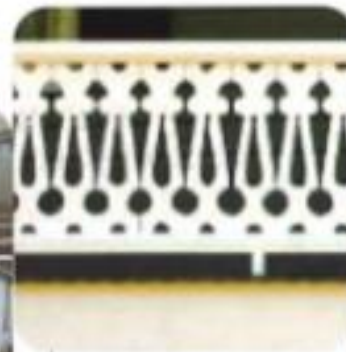
PVC Foam Boards



◆ Window Grilles



◆ Building deco



◆ Rail deco



◆ Cement Slab Rotations over 50 times



◆ Ship (Yacht) Interior Decorative



◆ Raft Cabin & Freezing Box



◆ Fencing



◆ Air Conditioning Case



◆ Freezer shelf & panel

PVC Foam Boards



◆ Display



◆ Silk Screen Printing



◆ UV Printing



◆ Sign & Display

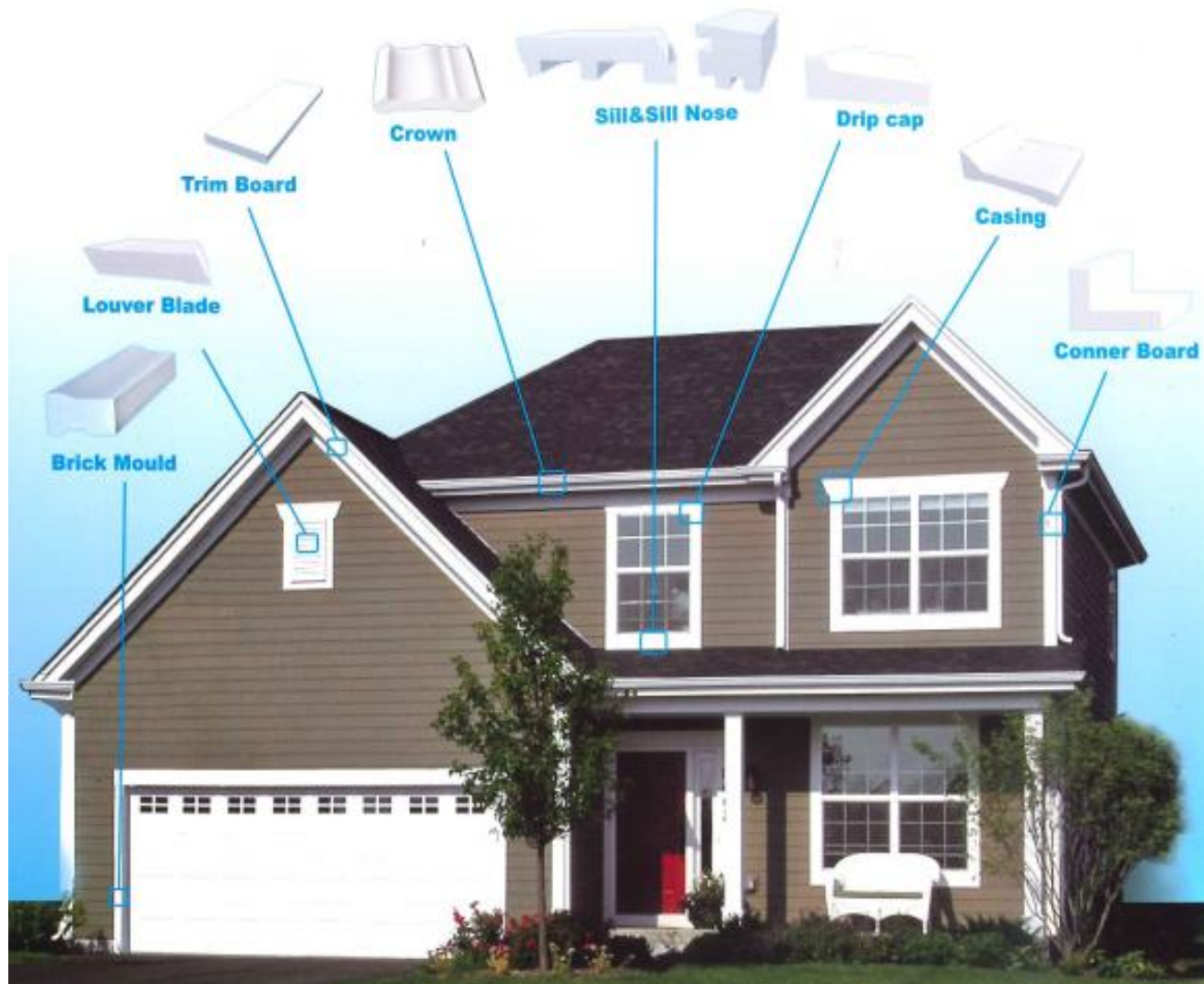


◆ Cutting

PVC Decorative board



PVC Molding



PVC Molding



FASTENER



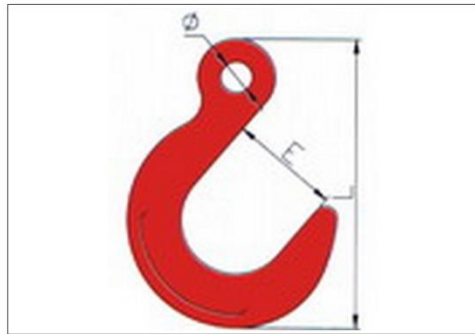
Fasteners





Liftings

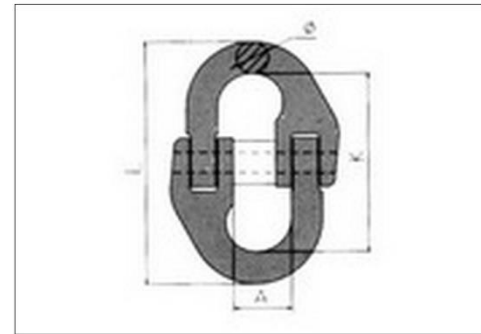
Chain Slings



Chain Hooks



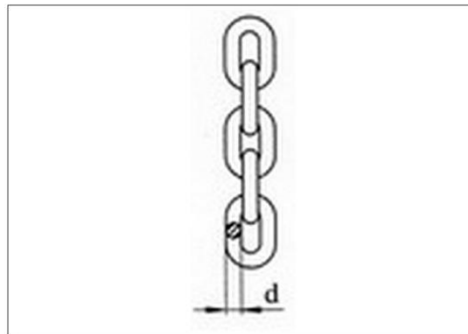
Chain Links



Connecting Links



EN818-2 Grade 80 Hoist Chain



G80 Calibrated Hoist Chain



Load Binder

Liftings

Fittings & Hardware



Chain Blocks



Claw Jack



Clips



Crowbar



Cuneiform Connector



Eye Bolts

Liftings

Fittings & Hardware



Hook Latches



Hooks



Lever Blocks



Links



Pallet Clamp



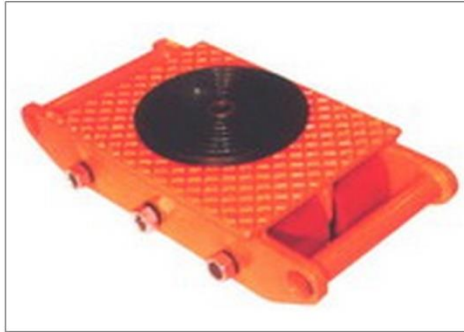
Pulley Blocks and Tackles

Liftings

Fittings & Hardware



Shackles



Small Porter



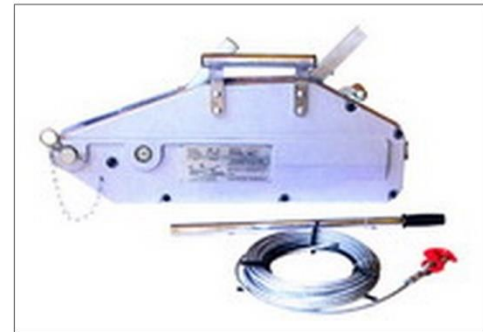
Spelter Sockets



Stainless Steel Accessories



Steel Plate Lifting Clamps



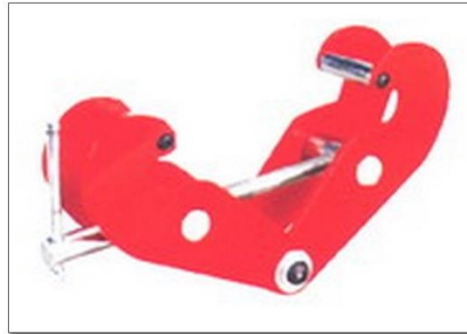
Steel Wire Rope Pulling Hoist

Liftings

Fittings & Hardware



Thimbles



Trolley Clamp



Turnbuckles



Type C Clamp

Liftings

Tie Downs



Cam Buckles



Flat Hooks



Hooks



Ratchets



Rings



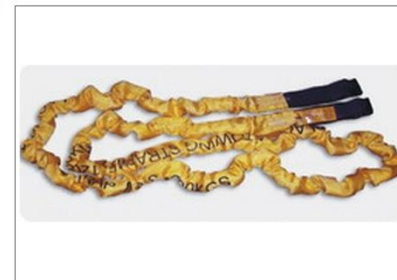
Safety Belts



Tie Down Strap Series



Tie Downs Series



Tow Straps

Liftings

Wire Rope



Cross Laid Wire Rope



Non Rotating Wire Rope



Parallel Laid Wire Rope



Shaped Strand Wire Rope

Synthetic Slings



Flat Webbing Sling Series



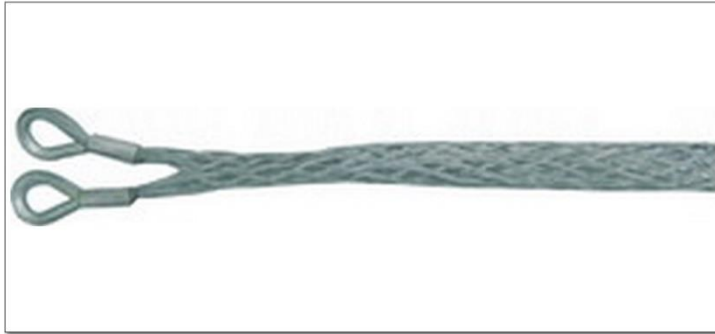
Round Sling Series



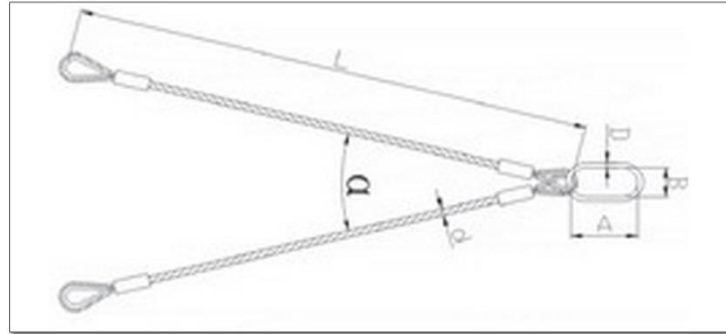
Webbing Series

Liftings

Wire Rope Slings



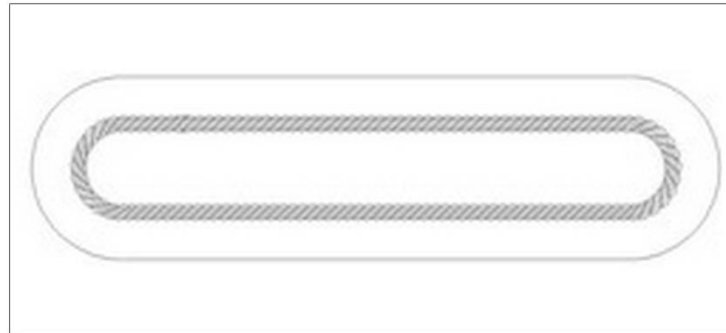
Double Eye Cable Stockings (Type B)



Double-Limb Swaged Joint Sling Assembly



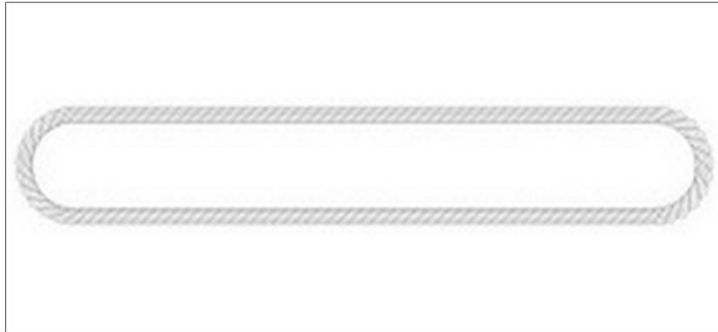
Duplex Oval Steel Sleeves



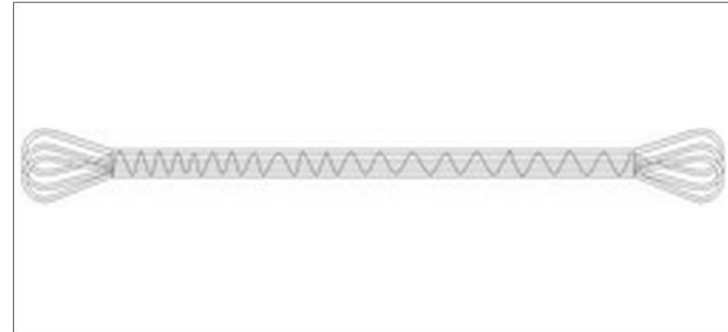
Endless Wire Rope Slings For Marine Engineering

Liftings

Wire Rope Slings



Endless Wire Rope Slings



Flat Wire Rope Mesh Slings



Flemish Eye Steel Swaging Sleeves



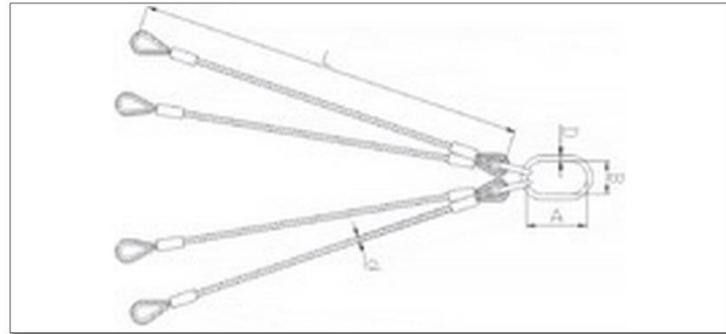
Forged Closed Swage Sockets

Liftings

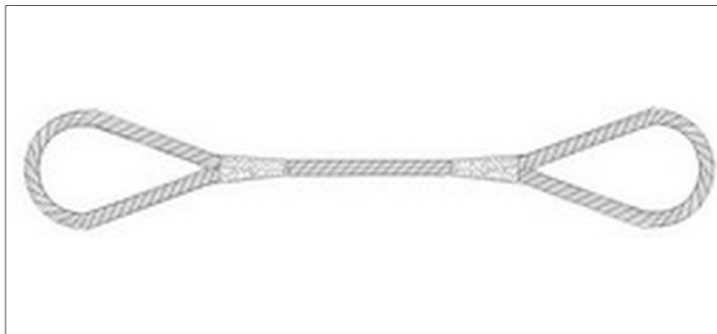
Wire Rope Slings



Forged Open Swage Sockets



Four-Limb Swaged Joint Sling Assembly



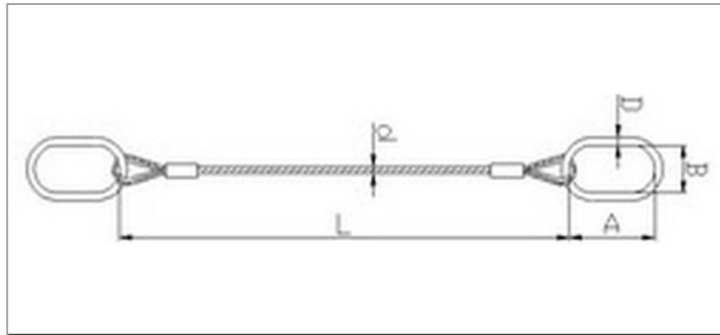
Large Diameter Cable-Laid Slings



Single Eye Cable Stockings (Type A)

Liftings

Wire Rope Slings



Single-Limb Swaged Joint Sling Assembly



Spliced Soft Loop Slings



Swage Thread Stud Ends



Swaged Joint Soft Loop Slings



Construction



Construction

Construction Mould



JCL-001(50輕U溝)



JCL-002(60重U溝)



JCL-003(方柱模)



JCL-004(圓柱模)



JCL-006(帽樑-1)



JCL-007(帽樑-2)



JCL-008(帽樑-3)



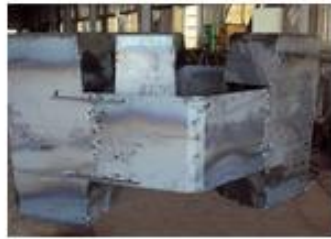
JCL-009(箱型樑)



JCL-010(2T斜克塊)

Construction

Construction Mould



JCL-011(元鼎塊)



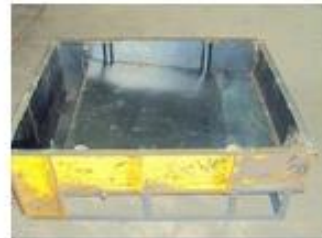
JCL-012(枝幹式鋼模)



JCL-013(異型塊)



JCL-014(中央護欄)



JCL-016(L溝)



JCL-017(人孔)



JCL-018(上下設備安全爬梯)



JCL-019(工作架)



JCL-020(吊桶)

Construction

Construction Mould



JCL-021(伸縮縫)



JCL-022(沈箱鋼模)



JCL-023(沉箱鐵腳)



JCL-024(防沖鋼板)



JCL-027(集水井人孔)



JCL-028(緣石)



JCL-029(擋土牆)



JCL-030(隧道模)

Construction

Tetrapod Mould



Joymar Co., Ltd. Had Supplied 5 Tons & 2 Tons of Tetrapod Mould for The 2 Units of 350 Mega Watts Power Plant to be Constructed at SBMA Subic.



Construction

Tetrapod Mould



Project in Taiwan



Construction

Convex Mirror



室內反射鏡

適用於：超市、銀行、停車場、汽車修理廠、工廠、停車場、商店、其他工作場所等處。*30cm自行調整。



室外用道路反射鏡

適用於：道路反射、停車場出入口、倉庫、其他室外場所等處。



鏡面尺寸	鏡面材質	背板材質	固定管徑 (直徑)
鏡面 30cm	玻璃材質	壓克力板	塑膠及塑膠
鏡面 45cm	玻璃材質	壓克力板	塑膠及塑膠
鏡面 60cm	玻璃材質	壓克力板	塑膠及塑膠
鏡面 75cm	玻璃材質	壓克力板	塑膠及塑膠
鏡面 20" x 15"	玻璃材質	壓克力板	塑膠及塑膠
鏡面 22" x 30"	玻璃材質	壓克力板	塑膠及塑膠



鏡面尺寸	鏡面材質	背板材質	固定管徑 (直徑)
鏡面 80cm	不銹鋼材質	鋁質鋼板	Ø75cm-4m3H
鏡面 80cm	玻璃材質	鋁質鋼板	Ø75cm-4m3H
鏡面 80cm	耐衝擊PC	鋁質鋼板	Ø75cm-4m3H
鏡面 80cm	不銹鋼材質	鋁質鋼板	Ø75cm-4m3H
鏡面 100cm	耐衝擊PC	鋁質鋼板	Ø75cm-4m3H
鏡面 100cm	不銹鋼材質	鋁質鋼板	Ø75cm-4m3H



【玻璃鏡面】

1. 玻璃鏡面及背板均係一體成型可視性佳，視野清晰不受玻璃厚度影響能清楚觀察視野。
2. 玻璃鏡面，在一般環境下即可使用，且不受溫度影響。
3. 價格便宜，且一般環境下即可使用，且不受溫度影響。
4. 可隨時更換（如玻璃破裂時）無須更換背板。



【不銹鋼鏡面】

1. 鏡面及背板均係一體成型，視野清晰。
2. 鏡面及背板均係一體成型，視野清晰。
3. 鏡面及背板均係一體成型，視野清晰。
4. 鏡面及背板均係一體成型，視野清晰。

【耐衝擊PC鏡面】

1. 鏡面及背板均係一體成型，視野清晰。
2. 鏡面及背板均係一體成型，視野清晰。
3. 鏡面及背板均係一體成型，視野清晰。
4. 鏡面及背板均係一體成型，視野清晰。



Construction

Convex Mirror

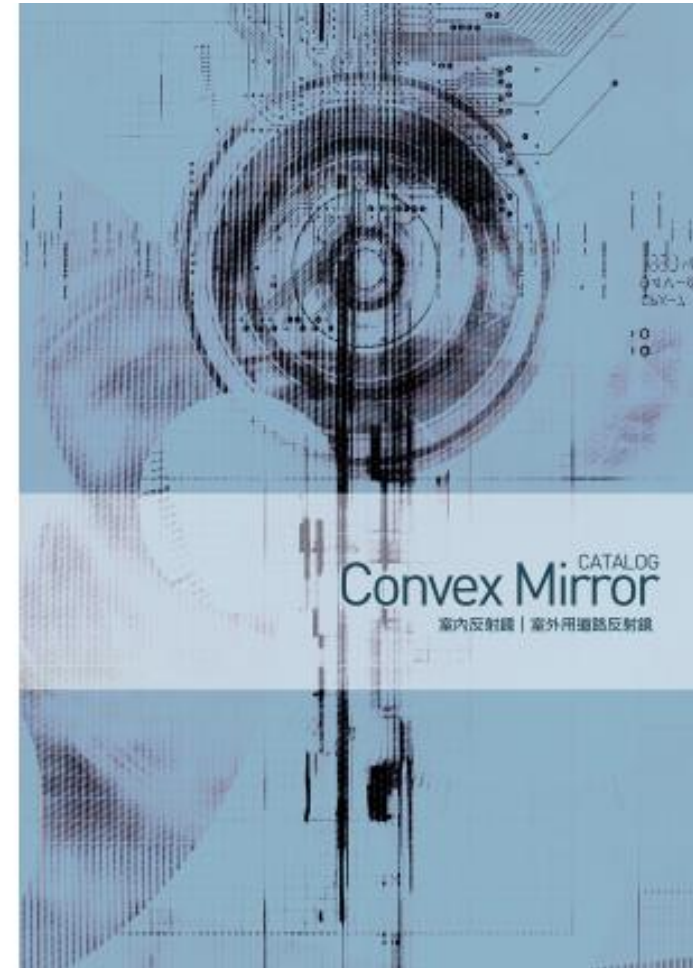


捷寶五金有限公司

地址：高雄市中區亭頂三路699號F-1

電話：07-5523432 傳真：07-5526828 電子郵件：buyping_line@joymar.com.tw

【營業項目】室內/外各類角尺光緒、防盜安全鏡、溫濕錶、客製化五金製鏡、監視攝影機、數百萬種鋼製設備



Convex Mirror CATALOG
室內反射鏡 | 室外用道路反射鏡

Solar Energy Lamps





PLUMBING



Plumbing



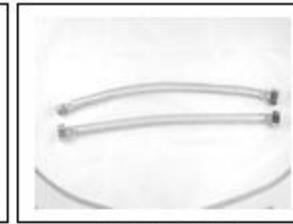
0002C&B



0002SS



0003



0004&0005



0010



0010S



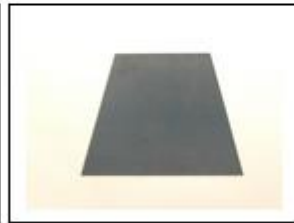
0011



0013



0014



0016



0017



0018B



0018C



0018D



0018E



0018F

Plumbing



0019



0020



0020H



0022S&L



0023



0024



0024H



0024L



0025



0027-3&4&5



0028S&L



1001



1002



1011



1012



1031

Plumbing



1032



1051



1052



1081



1082



1091



1092



1101



1101C



1102



1102C



2001



2002



2003



2004



2005

Plumbing



2006



2012&4&6



2022&4&6



2032&4&6



2042&4&6



2062&4&6



2072&4&6



2081



2082



2083



2084



2085



2086



2092&4&6



2101



2103

Plumbing



2104



2105



2106



2107



2112&4&6



2201



2203



2205



2206



2207



2301



2302



3001



3003



3004



3005

Plumbing



3006



3007



3008



3009



3022



3101



3102



3103S&M&L



3104



3104D



3104S



3105D



3105S



3106



4001



4003

Plumbing



4004



4005



4006



4011



5002



5003



5004



5005



5006



5011



6001



6002



6003



6005



6006



6007

Plumbing



6011



6012



6013



6015



6016



6017



6101



6102



6103



6104



6111



7001&2



7003



7005



7006



7008

Plumbing



7009



8022



8023



8024



8025



8031, 23456



8041



8041P



8051



8061 & 2&3&4&5&6



8071 & 2&3



8091 & 2&3



8101



8103



8104



8105

Plumbing



8106



8107



8201&2



9001



9002



9003



9004



9005



FLEXIBLE HOSE



GI Fitting



GI NIPPLE S-20 & S-40



GT101



GT102H&L



GT103



GT201



GT202

Plumbing



GT203



GT401&2&3&4



LXSC-15E&20E



M124HW&Y&G&P



M124W&Y&G&P



M135W&Y



PT101B&P



PT102B&P



SH103S&L



SH104



SH105



SH301



SH302



SH303



SH401



SH503

Plumbing



SP3



SP4P&Z



SP5



SP6Z&C



SP7



SP8



T124HW&Y&G&P



T124W&Y&G&P



T126LHW&G&P



T126LW&G&P

Quality Control

Sourcing - Meeting with Suppliers and Customers



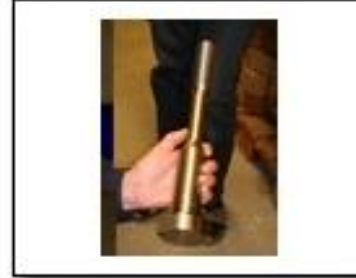
Quality Control

Sourcing - Meeting with Suppliers and Customers



Quality Control

Product Inspection



Quality Control

Product Inspection



Quality Control

Product Inspection



Quality Control

Product Inspection



Quality Control

Product Inspection



Quality Control

Quality Control



Quality Control

Quality Control



Quality Control

Quality Control



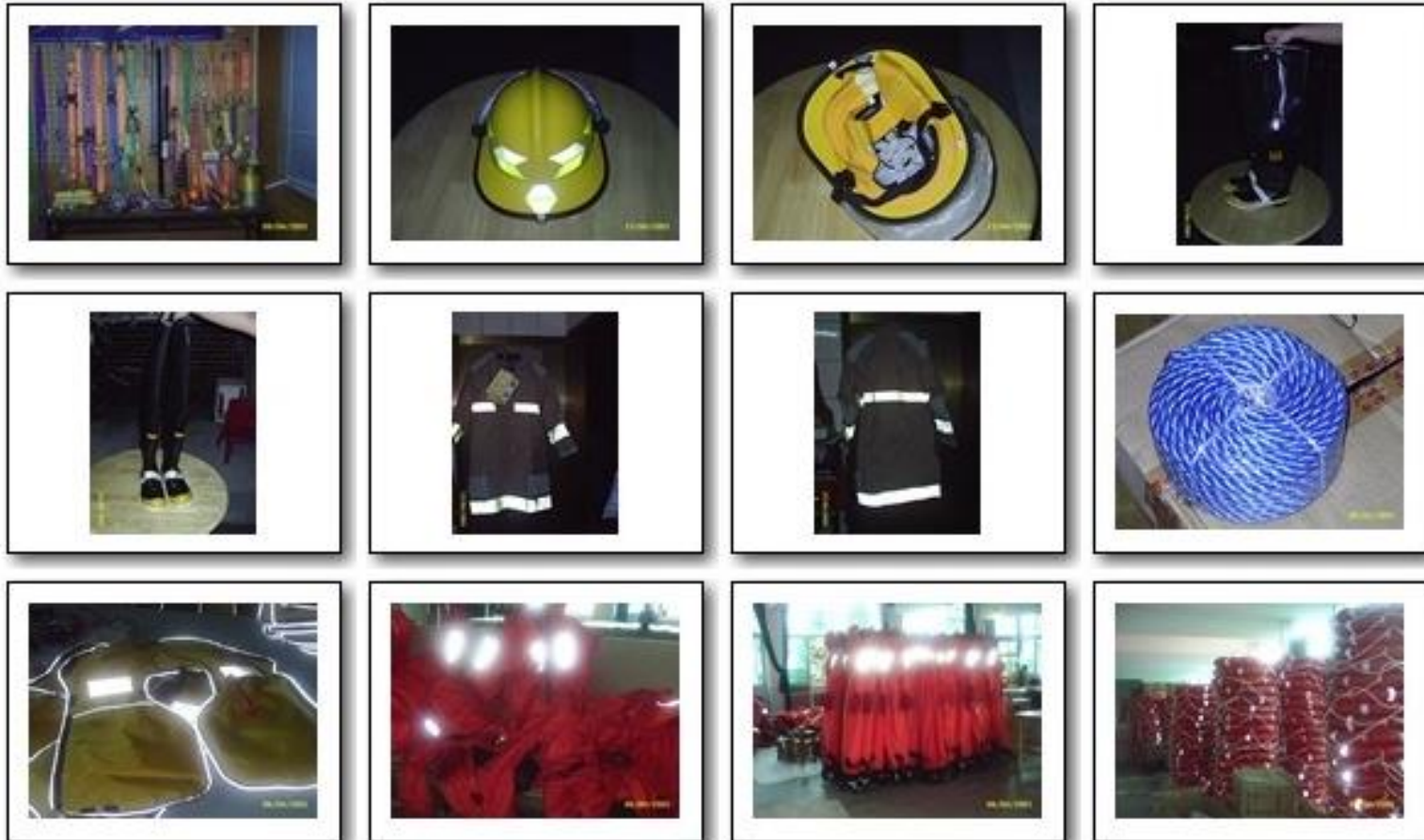
Quality Control

Quality Control



Quality Control

Quality Control





捷貿五金有限公司

高雄市鼓山區80453明誠三路659號8F-1 電話: 07-5523432 傳真: 07-5526828

網址: <https://www.joymar.com.tw/>

銷售部門：總經理 施泰安 行動電話：+886-963306223

edongsod@joymar.com.tw, taian@joymar.com.tw

李翠萍 行動電話：+886-985587765

tsuiping_lee@joymar.com.tw

JOYMAR Co., Ltd.

8F-1, No.659, Ming Cheng 3rd Rd., Gu Shang Dist., Kaohsiung City, Taiwan R.O.C.

Tel: +886-7-5523432 Fax: +886-7-5526828

Website: <https://www.joymar.com.tw/>

Sales Dep. : General Manager Eddie Ongsod +886-963306223

edongsod@joymar.com.tw, taian@joymar.com.tw

Tsuiping Lee +886-985587765

tsuiping_lee@joymar.com.tw